



Half & Half
by

HIND RABII
LIGHTING STUDIO



Half & Half

HALF & HALF

Design Alain Gilles / 2020

The Half & Half suspension is a suspension divided into two contrasted parts. The top of the light is inspired by brutalist architecture with some raw and striking edges.


These edges also happen to play with the daylight when the light is not on, they also happen to create an intriguing and lively focal point.



The top part of the lamp is made of ceramic in a shiny slightly uneven finish that is typical of some ceramics.

When several lights are used in the same space, because they would never be aligned the top part would almost look different according to the point of view. The perception of the top would also almost always appear different as the daylight changes with time, or when the light is lit in the evening.





The lower part of the suspension is made out of a frosted glass, it is the more subtle part of the lamp, the warmer and more human that generates the soft light.

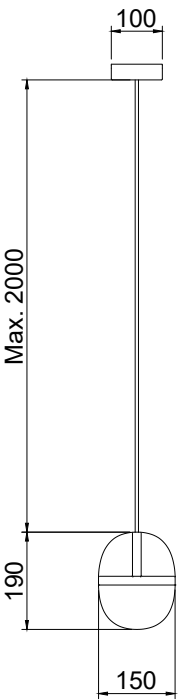
These opposing identities between the brutalist top and the softer, rounder bottom creates a discussion within the lamp itself.



It is a lamp that could be used in a private setting alone or as a bunch, especially for the smaller model.

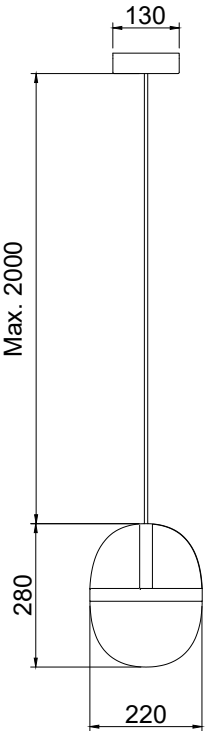
But a larger number of them could also be used to define the atmosphere of a coffee shop or restaurant.

Variations and finishes of
HALF / HALF



HALF / HALF S

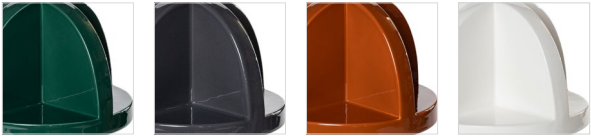
IP20 G9 led bulb 2700K
2*5W 700Lm



HALF / HALF L

IP20 G9 led bulb 2700K
3*5W 1050 Lm

Ceramic



Green Caviar Toscan Smooth

Glass



White
Opalin

