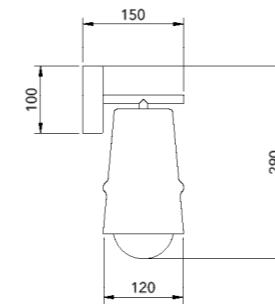
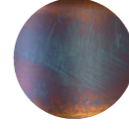


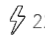



OURIKA WALL

Design by Hind Rabii 2024



Structure	 Flamed brass
Schade	 Flamed brass
Source	IP20 : G9 led bulb 3,5w 350lm 2700K - CRI>90 (included) IP55 : Led module 4,5w 350lm 2700K - CRI>90 Remote driver CV 12v (included)
Dimming	TRIAC dimmable (standard) DALI or CASAMBI on request (only for indoor)
Mounting	Wall
Weight	0,9 kg net weight
Structure material	Metal
Schade material	Aluminium & mouth blown glass
CE IP20/IP55   220-240v  CASAMBI	

	COD	FINISH
OURIKA	Ourika Wall Indoor IP20	Flamed brass (N°20402)
	Ourika Wall Outdoor IP55	Flamed brass (N°40401)